

The Reserve

West

STANDARD FEATURES

Richly Appointed Interiors

- Soaring 9 ft. tall flat ceiling throughout home
- 80' tall windows per floorplan
- Tape & texture walls throughout with modern square corners
- 2" pre-installed window blinds throughout
- Ceiling fan prep in living areas & primary bedroom
- Kwikset[®] door hardware throughout including a thumb-latch front door set - Matte Black
- Shaw[®] carpets with Rx2 stain technology
- Congoleum[®] "Lux" linoleum per print

Gourmet Kitchen

- Large eat-in islands with designer lighting
- Spacious walk-in pantries
- 42" tall DuraCraft[®] cabinets featuring adjustable upper shelves & hidden hinges
- Frigidaire stainless steel appliances
- 36" stainless steel European range hood
- Pfister[®] black matte pull down faucet

Primary Suite

- Extra large bedrooms including spacious walk-in closet
- Large 5 ft. fiberglass walk-in shower w/ door
- Impressive vanity with double sinks
- Pfister[®] black matte designer faucets

Energy Efficient Building

- eBuilt - Zero Energy Ready Home[®]
- Climate zone 3 insulation package
 - R-33 Floors, R-21 Walls, R-50 Roof
- 2x6" Exterior walls
- Argon gas low-E windows
- Architectural shingles with 30 year warranty
- The Reserve exterior with 2 dormers
- Craftsman style front door
- 9 lite or sliding glass rear door (per plan)
- Ecobee[®] Smart Thermostat
- LED Can lighting throughout home (per print)
- Rheem[®] hybrid water heater
- Carrier[®] Smart Comfort furnace
- 2 raised hose bibs & 2 exterior GFIs (per plan)

Custom Options

- Frigidaire[®] black stainless steel appliances
 - 25 cu ft refrigerator-water & ice door in door
 - Pot scrubber dishwasher
 - Spacesaver microwave & deluxe range
- Solid surface countertops throughout
- WUI fire rated certification
- Upgrade roof loads
- Whole home gas package
- Deluxe primary glamour bath



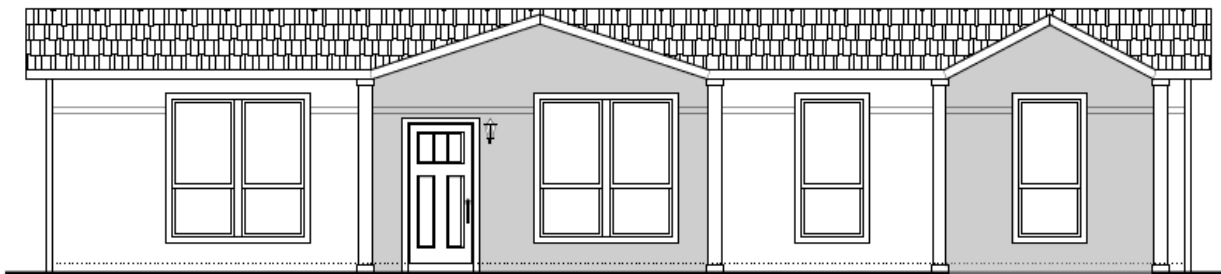
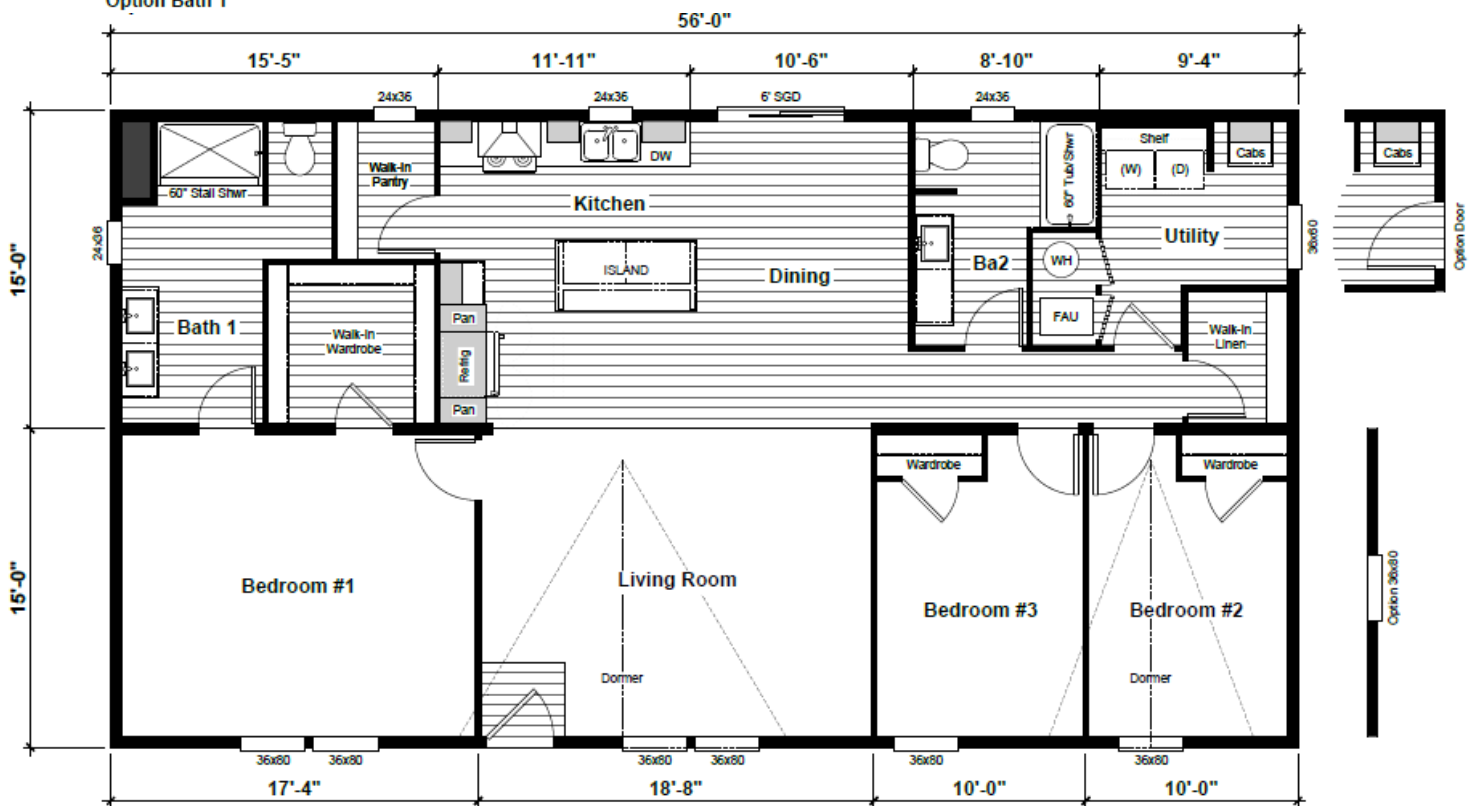
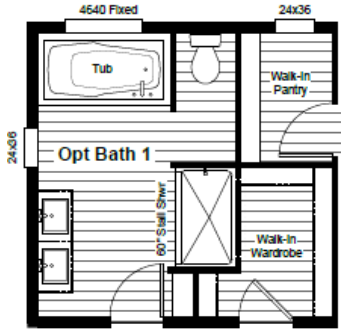
eBuilt Ask me about Zero Energy Ready[™] Homes

Scan to learn more about eBuilt[™]

The Reserve *West*

Acadia

TR-32563A | 3 Beds | 2 Baths | 1680 Sq. Ft



eBuilt. Ask me about Zero Energy Ready™ Homes

Scan to learn more about eBuilt™

FACTORY ORDER FORM

Clayton Buckeye Home Buiding Facility
Phn: 623-386-4495

CHOOSE YOUR "ACADIA" OPTIONS

- \$495 Utility Room Door
 - \$395 Bedroom 2 Window
 - \$895 Gas Package 100 Amp
Includes Gas Furnace & Range, Hybrid Electric WH (Gas WH not available)
 - \$280 Garbage Disposal
 - \$2295 WUI - Wildfire Urban Interface Package
 - CALL Upgrade Roof loads
 - \$-650 Omit Carpet & Pad
 - \$-500 Omit Linoleum
 - \$495 Upgrade Front Endwall Exterior
 - \$275 A/C Ready (per print-only, no relocation)
 - \$695 Awning Ready
-
- \$1995 Glamour Bath
 - \$2995 Solid Surface Countertop Package
Includes: Undermount stainless steel kitchen sink & white drop-in bath sinks
 - \$1995 Black Stainless Steel Appliance Package
Includes: 25 Cu Ft Refrigerator, dishwasher, range & space saver microwave
 - \$5995 ****I WANT ALL 3 (Glamour Bath, Solid Surface & Black SS)**
-
- STD eBuilt - Zero Energy Ready Home Certified
 - STD 2 Raised Hose Bibs (per print-only, no relocation)
 - STD 2 Exterior GFI's (per print-only, no relocation)

PICK YOUR COLORS

CABINET COLOR: _____ Handle Color: _____

COUNTERTOP COLOR: _____

SHINGLE COLOR: _____

EXT PAINT: Body: _____ Trim: White Only Accent: _____

NOTES TO FACTORY: _____

Acadia

TR-32563A | 3 Beds | 2 Baths | 1680 Sq. Ft



HOME CENTER: _____ CUSTOMER: _____ DATE: _____ / _____ / _____

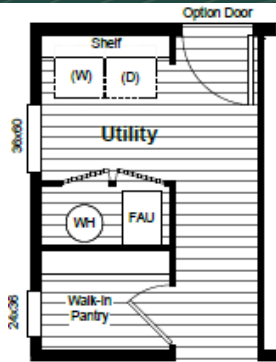
The home series, floor plans, photos, renderings, specifications, features, pricing, materials and availability shown will vary by retailer and state and are subject to change without notice.

The Reserve

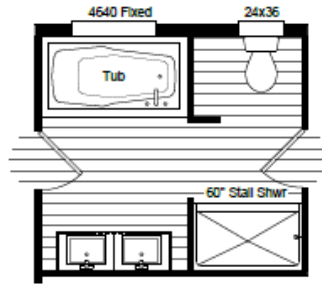
West

Bryce

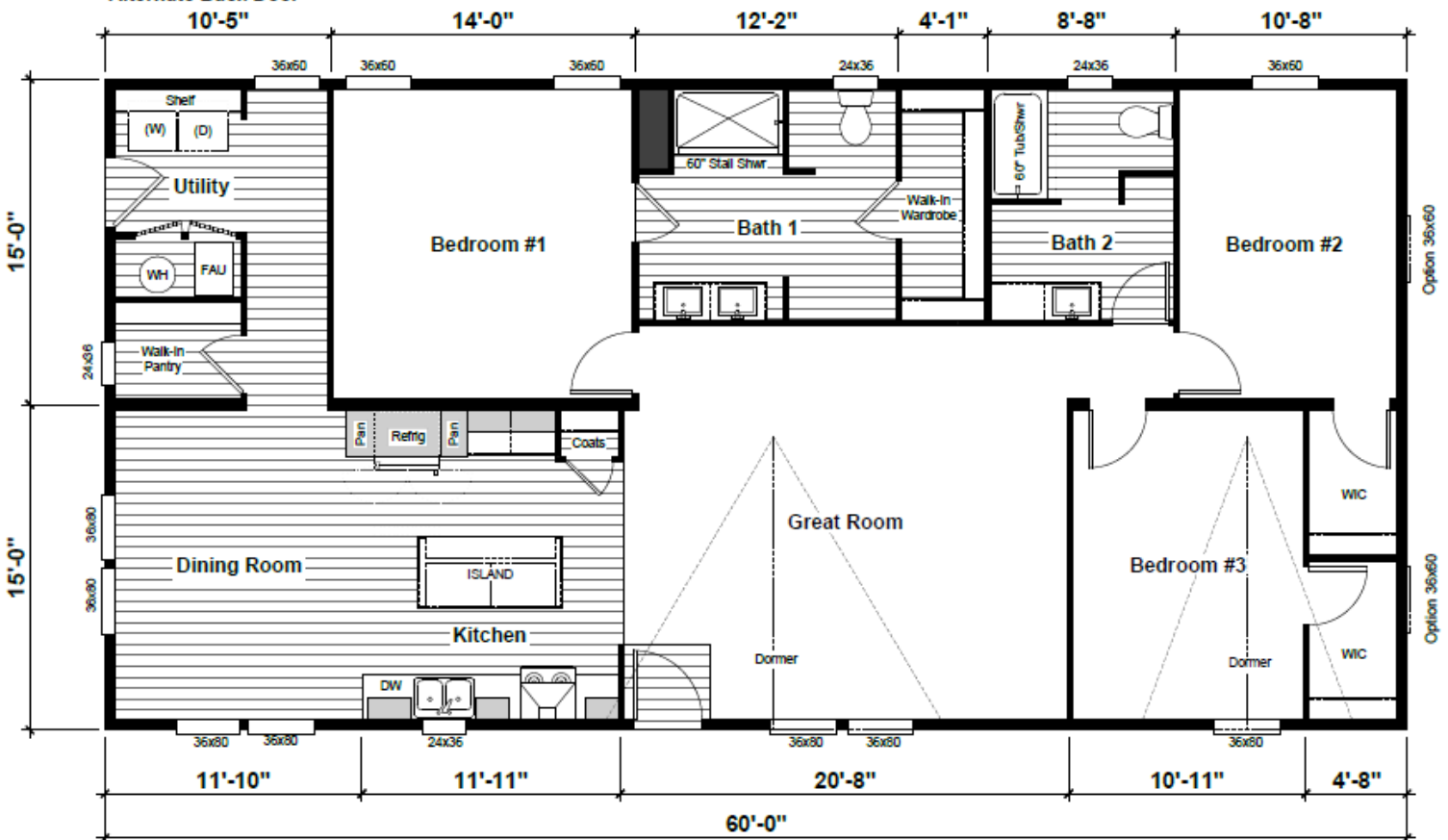
TR-32603A | 3 Beds | 2 Baths | 1800 Sq. Ft



Alternate Back Door
10'-5"



Option Bath 1



eBuilt. Ask me about Zero Energy Ready™ Homes



FACTORY ORDER FORM

Clayton Buckeye Home Buiding Facility
Phn: 623-386-4495

CHOOSE YOUR "BRYCE" OPTIONS

- \$N/C Alternate Utility Room Door
 - \$395 Bedroom Window (each)
 - \$895 Gas Package 100 Amp
Includes Gas Furnace & Range, Hybrid Electric WH (Gas WH not available)
 - \$280 Garbage Disposal
 - \$2295 WUI - Wildfire Urban Interface Package
 - CALL Upgrade Roof Loads
 - \$-675 Omit Carpet & Pad
 - \$-600 Omit Linoleum
 - \$495 Upgrade Front Endwall Exterior
 - \$275 A/C Ready (per print-only, no relocation)
 - \$695 Awning Ready
-
- \$1995 Glamour Bath
 - \$2995 Solid Surface Countertop Package
Includes: Undermount stainless steel kitchen sink & white drop-in bath sinks
 - \$1995 Black Stainless Steel Appliance Package
Includes: 25 Cu Ft Refrigerator, dishwasher, range & space saver microwave
 - \$5995 ****I WANT ALL 3 (Glamour Bath, Solid Surface & Black SS)**
-
- STD eBuilt - Zero Energy Ready Home Certified
 - STD 2 Raised Hose Bibs (per print-only, no relocation)
 - STD 2 Exterior GFI's (per print-only, no relocation)

PICK YOUR COLORS

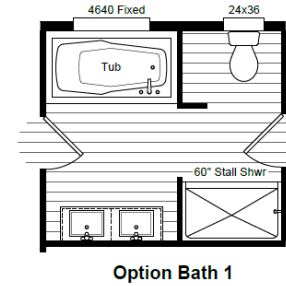
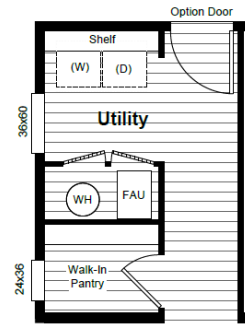
CABINET COLOR: _____ Handle Color: _____

COUNTERTOP COLOR: _____

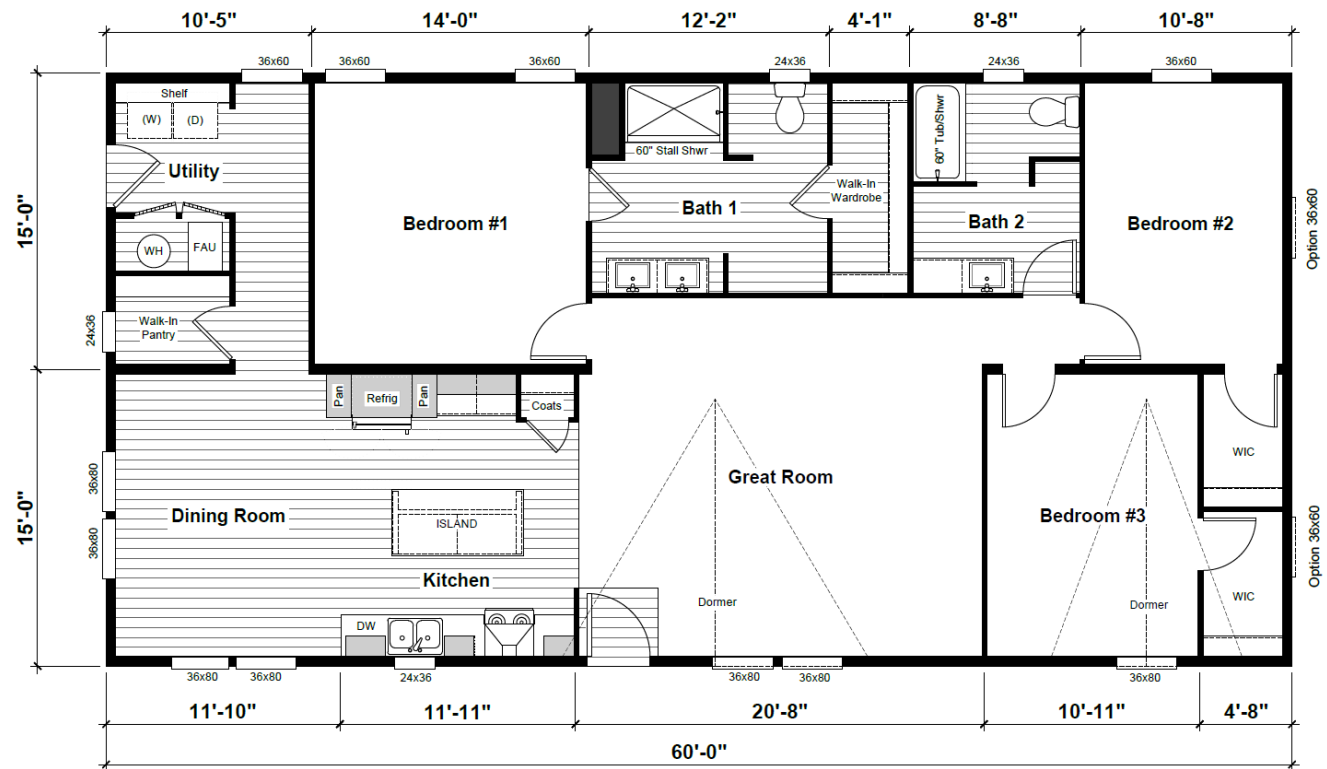
SHINGLE COLOR: _____

EXT PAINT: Body: _____ Trim: White Only Accent: _____

NOTES TO FACTORY: _____



Bryce
TR-32603A
3 Beds | 2 Baths | 1800 Sq. Ft



HOME CENTER: _____ CUSTOMER: _____ DATE: _____ / _____ / _____

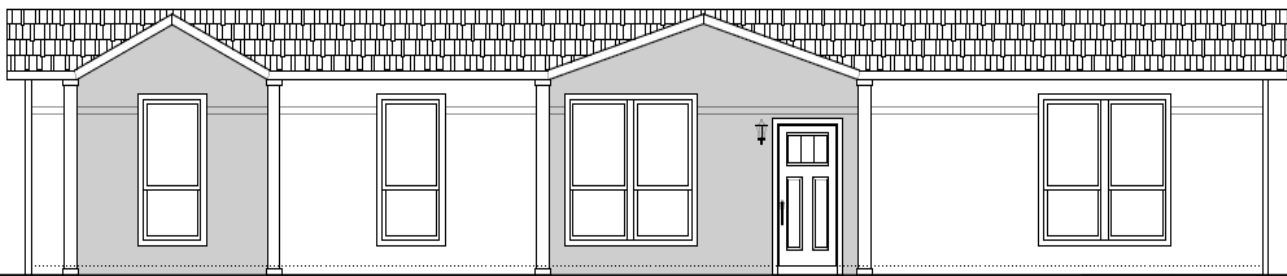
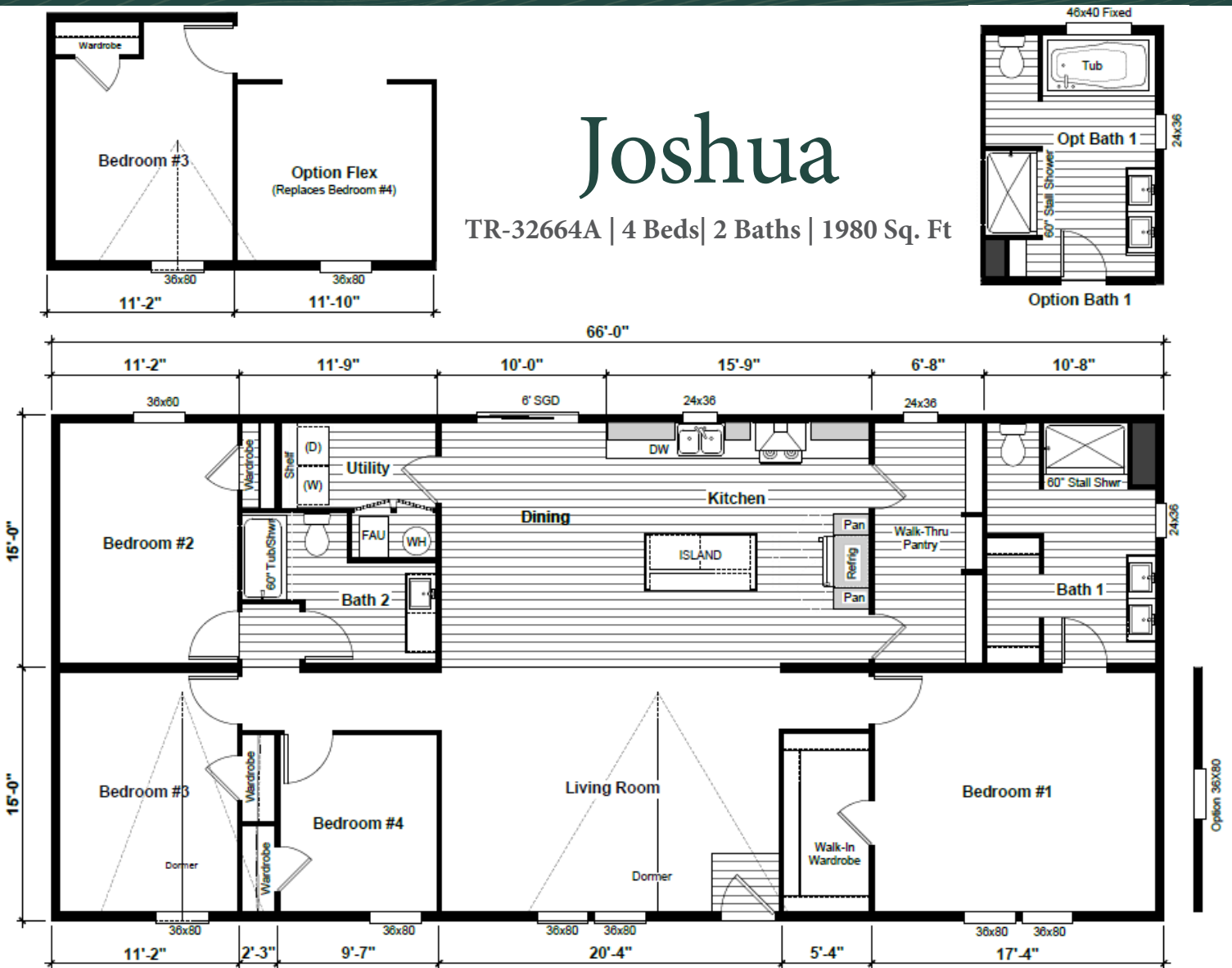
The home series, floor plans, photos, renderings, specifications, features, pricing, materials and availability shown will vary by retailer and state and are subject to change without notice.

The Reserve

West

Joshua

TR-32664A | 4 Beds | 2 Baths | 1980 Sq. Ft



eBuilt Ask me about Zero Energy Ready™ Homes



Scan to learn more about eBuilt™

FACTORY ORDER FORM

Clayton Buckeye Home Buiding Facility
Phn: 623-386-4495

CHOOSE YOUR "JOSHUA" OPTIONS

- \$N/C Flex Room IPO Bedroom 4
 - \$395 Bedroom Window (each)
 - \$895 Gas Package 100 Amp
Includes Gas Furnace & Range, Hybrid Electric WH (Gas WH not available)
 - \$280 Garbage Disposal
 - \$2295 WUI - Wildfire Urban Interface Package
 - CALL Upgrade Roof Load
 - \$-675 Omit Carpet & Pad
 - \$-600 Omit Linoleum
 - \$495 Upgrade Front Endwall Exterior
 - \$275 A/C Ready (per print-only, no relocation)
 - \$695 Awning Ready
-
- \$1995 Glamour Bath
 - \$2995 Solid Surface Countertop Package
Includes: Undermount stainless steel kitchen sink & white drop-in bath sinks
 - \$1995 Black Stainless Steel Appliance Package
Includes: 25 Cu Ft Refrigerator, dishwasher, range & space saver microwave
 - \$5995 ****I WANT ALL 3 (Glamour Bath, Solid Surface & Black SS)**
-
- STD eBuilt - Zero Energy Ready Home Certified
 - STD 2 Raised Hose Bibs (per print-only, no relocation)
 - STD 2 Exterior GFI's (per print-only, no relocation)

PICK YOUR COLORS

CABINET COLOR: _____ Handle Color: _____

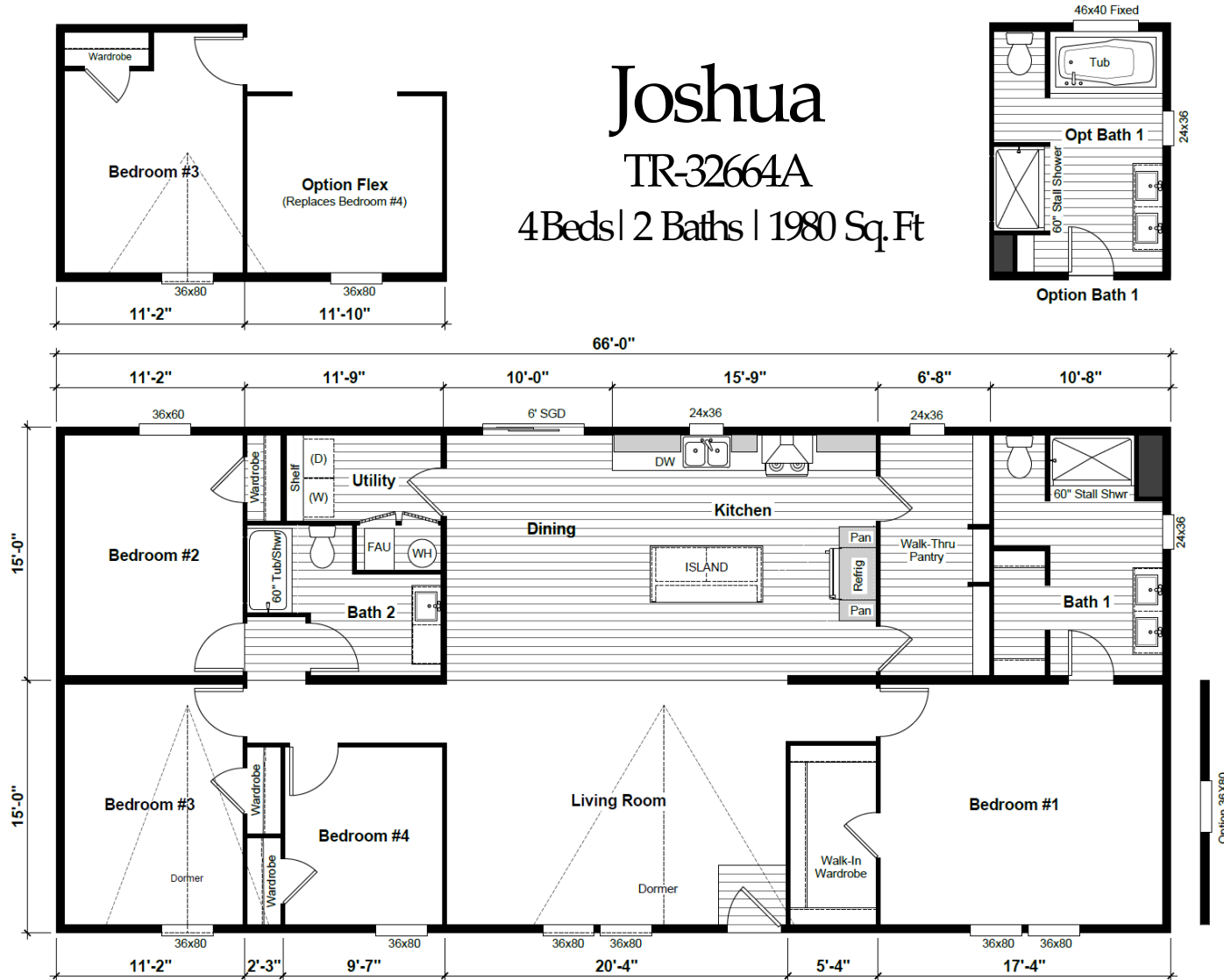
COUNTERTOP COLOR: _____

SHINGLE COLOR: _____

EXT PAINT: Body: _____ Trim: White Only Accent: _____

NOTES TO FACTORY: _____

Joshua
TR-32664A
4 Beds | 2 Baths | 1980 Sq. Ft



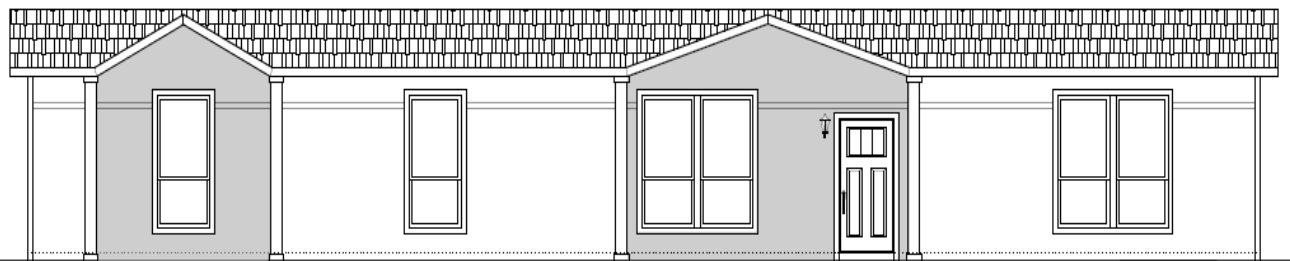
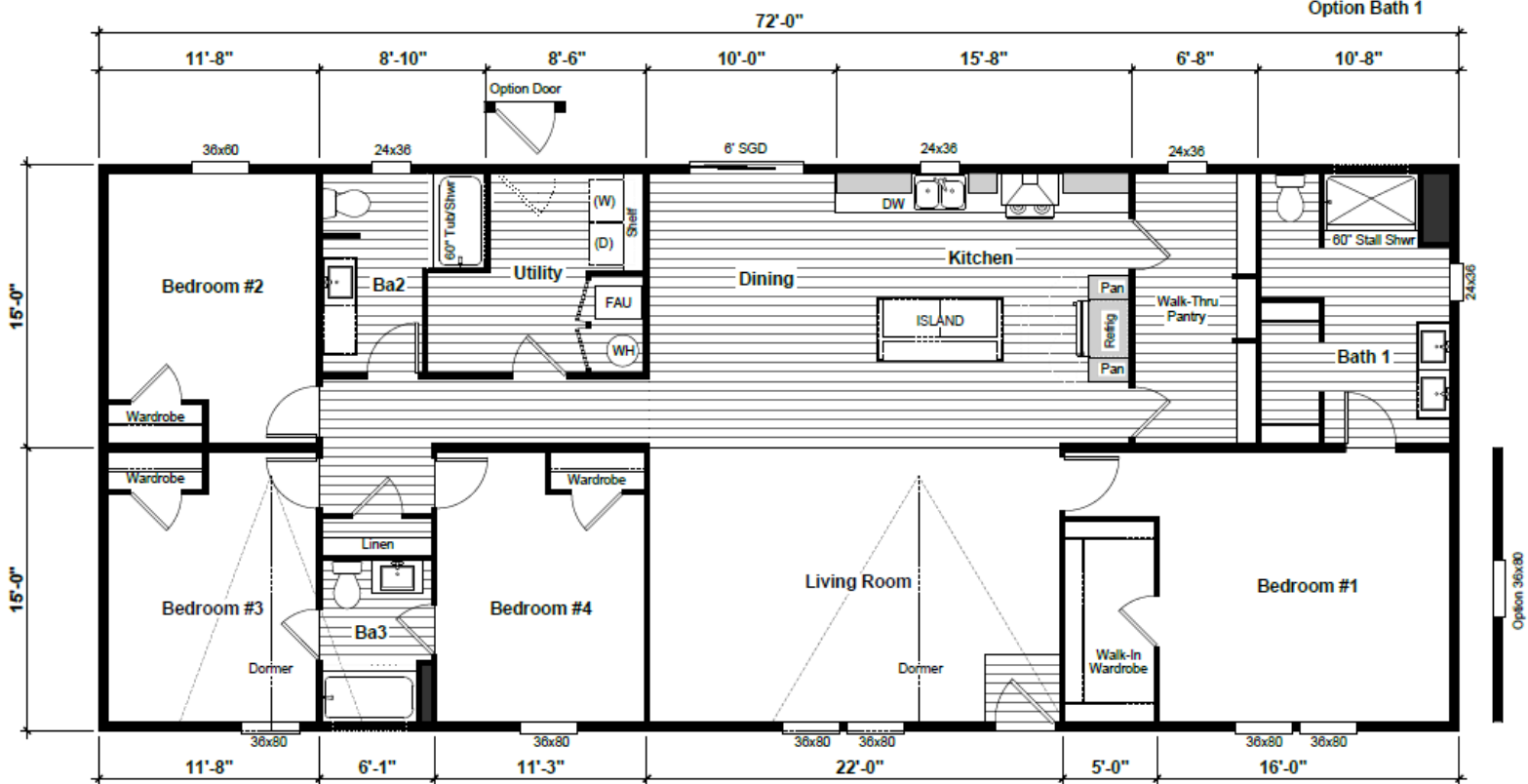
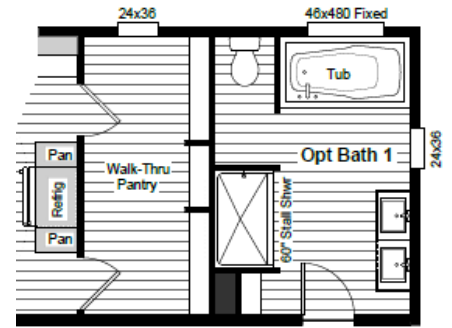
HOME CENTER: _____ CUSTOMER: _____ DATE: _____ / _____ / _____

The home series, floor plans, photos, renderings, specifications, features, pricing, materials and availability shown will vary by retailer and state and are subject to change without notice.

The Reserve West

Ranier

TR-32724A | 4 Beds | 3 Baths | 2160 Sq. Ft



eBuilt Ask me about Zero Energy Ready™ Homes

FACTORY ORDER FORM

Clayton Buckeye Home Buiding Facility
Phn: 623-386-4495

CHOOSE YOUR "RANIER" OPTIONS

- \$495 Utility Room Door
 - \$395 Bedroom Window (each)
 - \$895 Gas Package 100 Amp
Includes Gas Furnace & Range, Hybrid Electric WH (Gas WH not available)
 - \$280 Garbage Disposal
 - \$2295 WUI - Wildfire Urban Interface Package
 - CALL Upgrade Roof Load
 - \$-675 Omit Carpet & Pad
 - \$-600 Omit Linoleum
 - \$495 Upgrade Front Endwall Exterior
 - \$275 A/C Ready (per print-only, no relocation)
 - \$695 Awning Ready
-
- \$1995 Glamour Bath
 - \$2995 Solid Surface Countertop Package
Includes: Undermount stainless steel kitchen sink & white drop-in bath sinks
 - \$1995 Black Stainless Steel Appliance Package
Includes: 25 Cu Ft Refrigerator, dishwasher, range & space saver microwave
 - \$5995 ****I WANT ALL 3 (Glamour Bath, Solid Surface & Black SS)**
-
- STD eBuilt - Zero Energy Ready Home Certified
 - STD 2 Raised Hose Bibs (per print-only, no relocation)
 - STD 2 Exterior GFI's (per print-only, no relocation)

PICK YOUR COLORS

CABINET COLOR: _____ Handle Color: _____

COUNTERTOP COLOR: _____

SHINGLE COLOR: _____

EXT PAINT: Body: _____ Trim: White Only Accent: _____

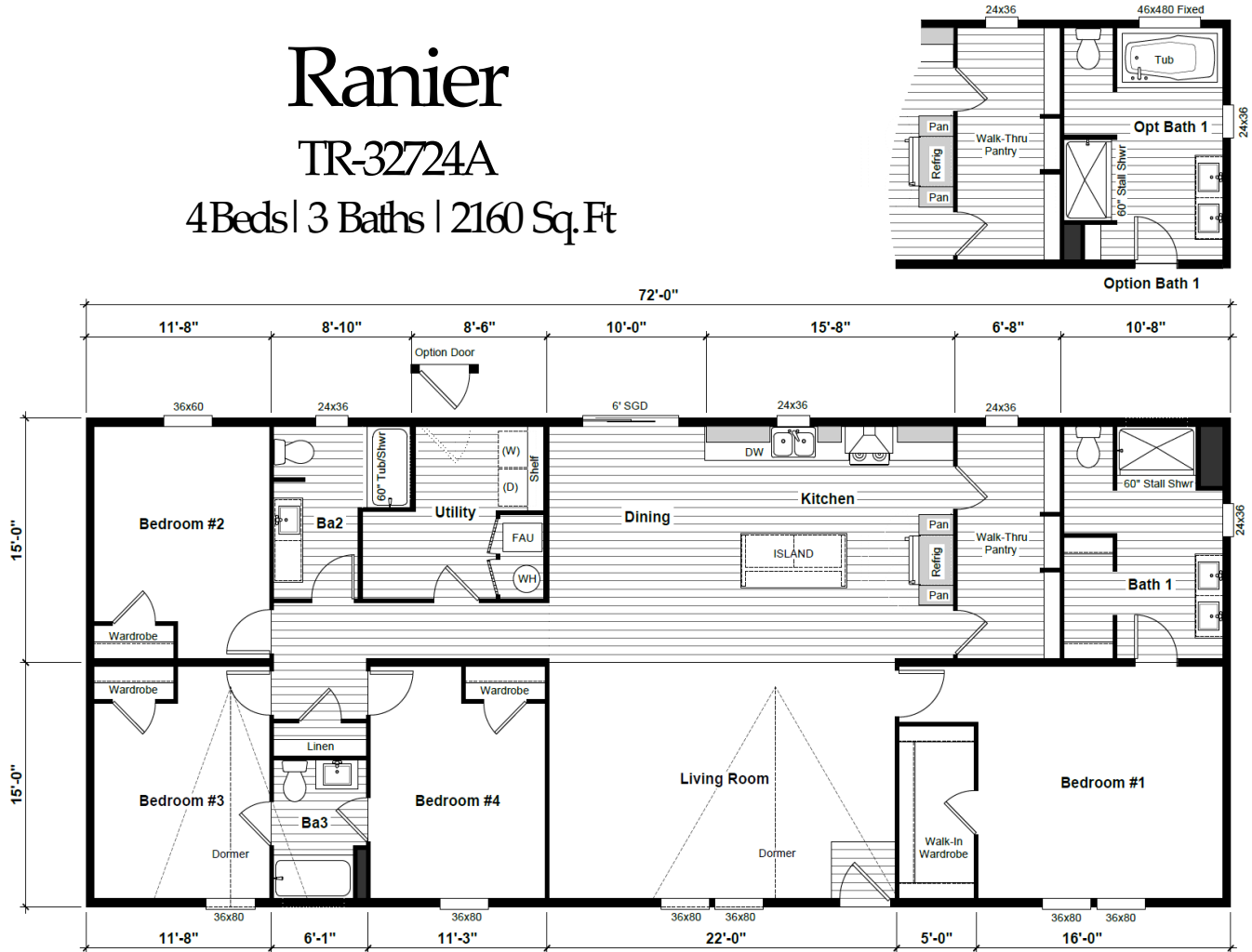
NOTES TO FACTORY: _____

HOME CENTER: _____ CUSTOMER: _____ DATE: _____ / _____ / _____ .

Ranier

TR-32724A

4 Beds | 3 Baths | 2160 Sq. Ft

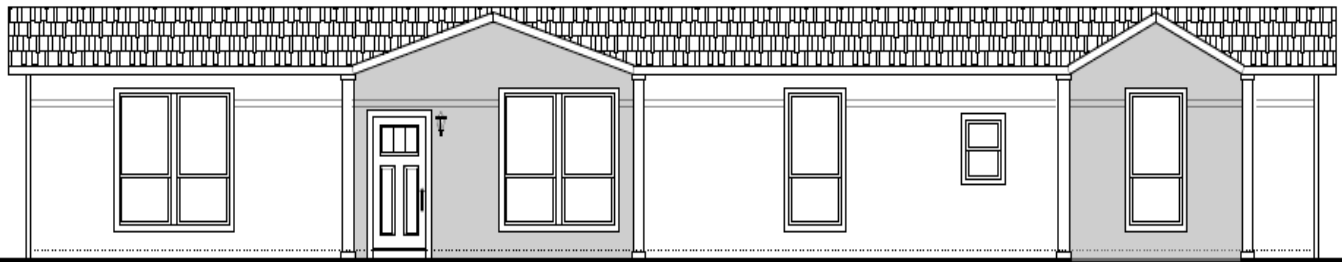
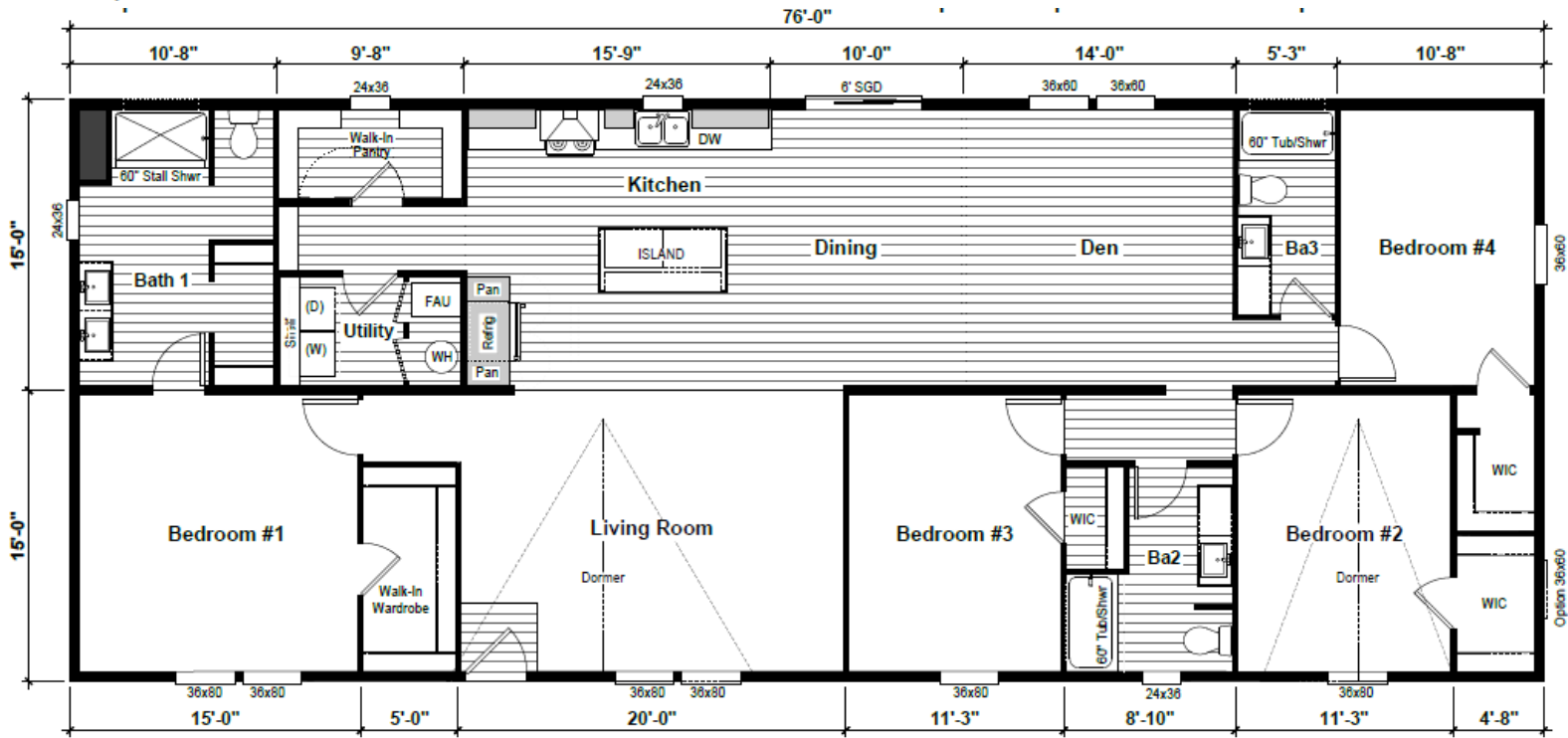
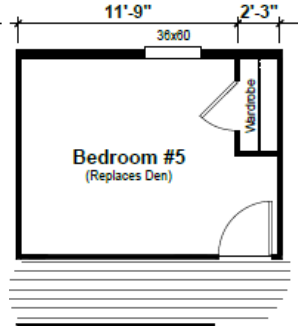
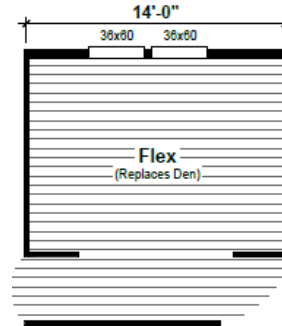
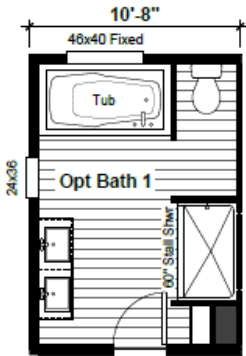


The Reserve

West

Grand

TR-32764A | 4 or 5 Beds | 3 Baths | 2280 Sq. Ft



eBuilt Ask me about Zero Energy Ready™ Homes

Scan to learn more about eBuilt™

FACTORY ORDER FORM

Clayton Buckeye Home Buiding Facility
Phn: 623-386-4495

CHOOSE YOUR "GRAND" OPTIONS

- \$1195 Bedroom 5 IPO Den
 - \$395 Bedroom Window (each)
 - \$895 Gas Package 100 Amp
Includes Gas Furnace & Range, Hybrid Electric WH (Gas WH not available)
 - \$280 Garbage Disposal
 - \$2295 WUI - Wildfire Urban Interface Package
 - CALL Upgrade Roof Load
 - \$-675 Omit Carpet & Pad
 - \$-600 Omit Linoleum
 - \$495 Upgrade Front Endwall Exterior
 - \$275 A/C Ready (per print-only, no relocation)
 - \$695 Awning Ready
-
- \$1995 Glamour Bath
 - \$2995 Solid Surface Countertop Package
Includes: Undermount stainless steel kitchen sink & white drop-in bath sinks
 - \$1995 Black Stainless Steel Appliance Package
Includes: 25 Cu Ft Refrigerator, dishwasher, range & space saver microwave
 - \$5995 ****I WANT ALL 3 (Glamour Bath, Solid Surface & Black SS)**
-
- STD eBuilt - Zero Energy Ready Home Certified
 - STD 2 Raised Hose Bibs (per print-only, no relocation)
 - STD 2 Exterior GFI's (per print-only, no relocation)

PICK YOUR COLORS

CABINET COLOR: _____ Handle Color: _____

COUNTERTOP COLOR: _____

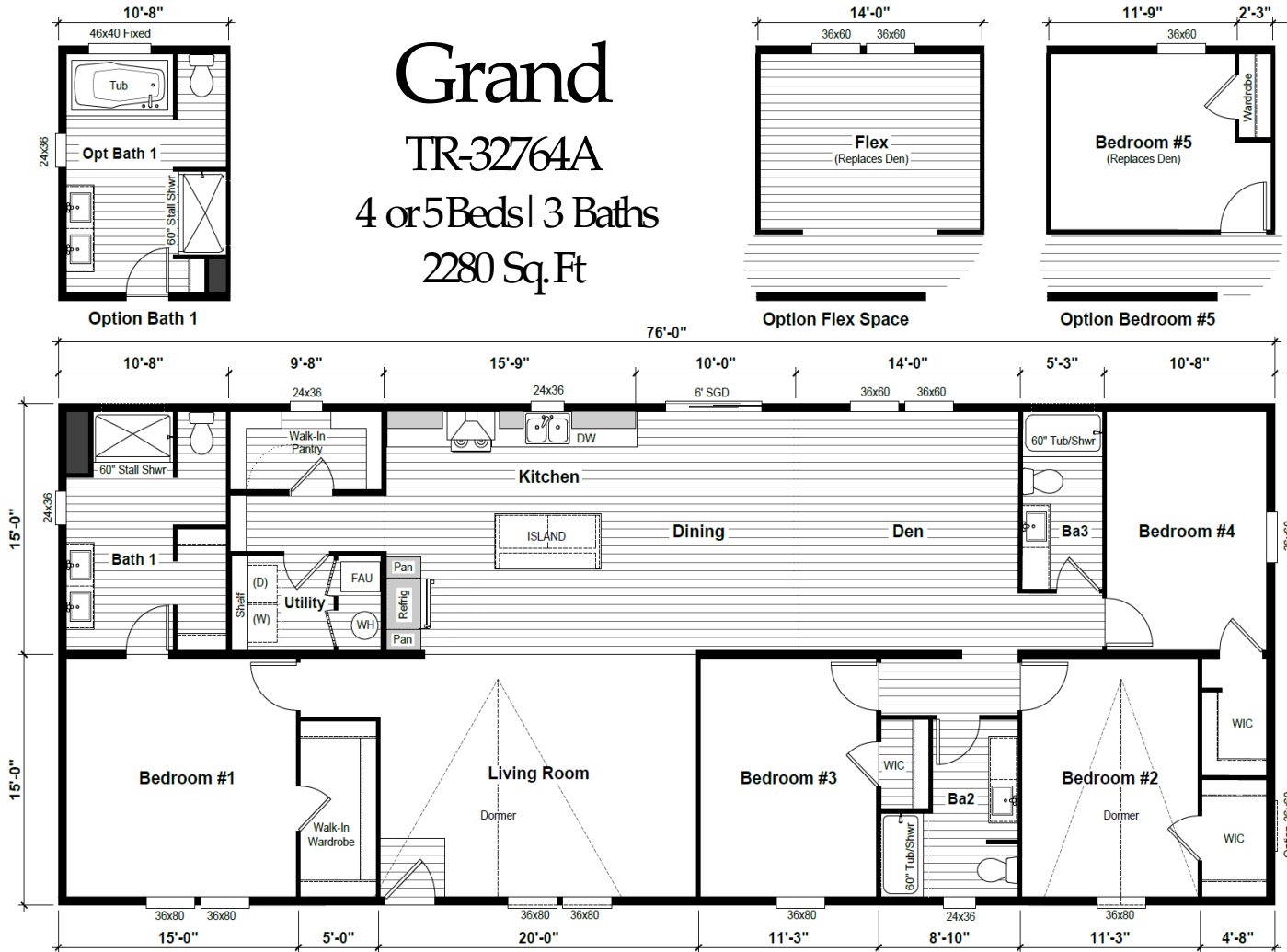
SHINGLE COLOR: _____

EXT PAINT: Body: _____ Trim: White Only Accent: _____

NOTES TO FACTORY: _____

HOME CENTER: _____ CUSTOMER : _____ DATE: _____ / _____ / _____ .

Grand
TR-32764A
4 or 5 Beds | 3 Baths
2280 Sq. Ft



The home series, floor plans, photos, renderings, specifications, features, pricing, materials and availability shown will vary by retailer and state and are subject to change without notice.

The Reserve *West*

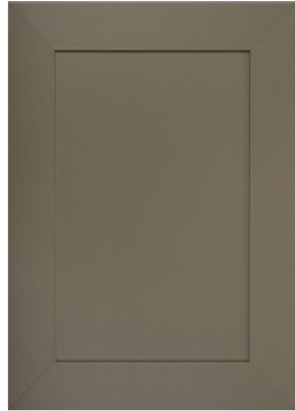
Decor Selections

CABINETS

Select One Color Throughout Home



Bishop Oak Picture Frame
Duracraft Cabinets



Plover Picture Frame
Duracraft Cabinets



Studio Beige Picture Frame
Duracraft Cabinets



Onyx Picture Frame
Duracraft Cabinets

STD COUNTERTOPS

Formica - Throughout Home



Terrena Soapstone



Silver Quartzite

Select One Color Throughout Home

FLOORING

See Floorplan for Type & Location



Linoleum: LUX Natural Oak #311



Carpet: Shaw Weathered New Weave

Multi Section Homes Only

CABINET KNOBS

See Prints For Location



L: Brushed Brass Egg Knob
R: Matte Black Round Knob

OPT COUNTERTOPS

Solid Surface Throughout Home



Staron - Supreme Cotton White

eBuilt. Ask me about Zero Energy Ready™ Homes

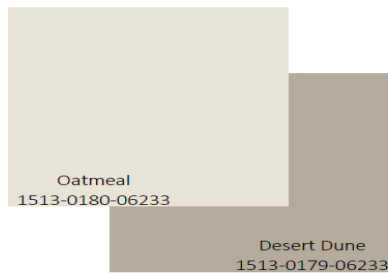
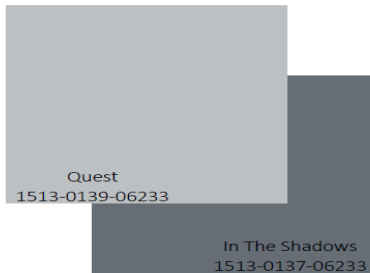
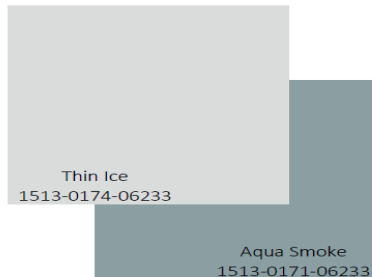
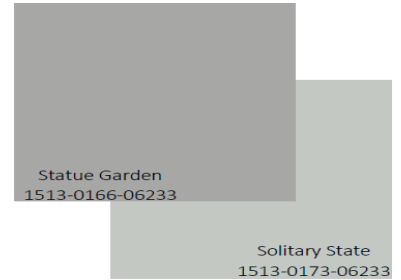
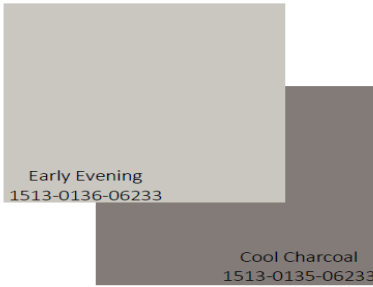


Scan to learn more about eBuilt™

The Reserve *West*

EXTERIOR COLORS

Select A Package Below - Trim & Columns Are Always White



ARCHITECTURAL SHINGLES



Weathered Wood



Old English Pewter



eBuilt. Ask me about Zero Energy Ready™ Homes

The Reserve *West*

Ask Me About **eBuilt™**

The highest-performing,
most energy-efficient home
Clayton has ever built.



Scan to tour an eBuilt™ home

Home Features

Solar - ready

Pfister® bathroom fixtures

ecobee® smart thermostat

Argon gas low-E windows

SmartComfort® by Carrier®
heat pump or gas furnace

LED lighting

ENERGY STAR®
Frigidaire® appliances

Additional home insulation

Rheem® hybrid heat pump
water heater

Insulated doors

Sealed duct system

Whole house
ventilation system